

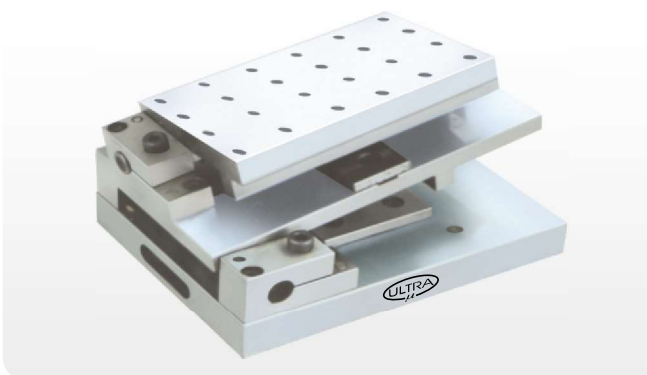
23 SERIES **UL - 401** "ULTRA" BRAND SINE-TABLE (IS : 5939-1970)



- Used for Precision measurement, setting of angles utilizing slip gauge & light machining.
- Ideal for high accuracy grinding operations.
- Accuracy for squareness, Parallelism & flatness is 0.010mm upto 200L & 0.015mm upto 450L.
- Positive locking at all angles without any distortion.
- Angle can be set within ± 5 seconds.
- Centre Distance between rollers is within 0.005mm.
- Made from high quality alloy steel
- Hardness 58 ± 2 Rc & Tempered.
- Firm clamp to reduce possibility of distortion.
- M6 & M8 tapped holes for job clamping.
- Low height for more wheel clearance.
- **Slotted sine table on Request.**
- **Also Manufacture as per customers requirement.**

Sr. No.	Cat No.	Size (mm)	Centre Distance (mm)	Inclination
1.	UL 40101	150 L x 120 W x 65 H	70	0 - 45°
2.	UL 40102	250 L x 150 W x 65 H	100	0 - 45°
3.	UL 40103	300 L x 150 W x 65 H	100	0 - 45°
4.	UL 40104	450 L x 150 W x 65 H	100	0 - 45°

24 SERIES **UL - 402** "ULTRA" BRAND COMPOUND SINE-TABLE (IS : 5939 - 1970)



- **Compound Angle facility.**
- Used for Precision measurement, setting of angles & Light machining.
- Accuracy for Square ness, Flatness & Parallelism within 0.010mm upto 200L & 0.015mm upto 450L.
- Angle can be set within ± 5 seconds.
- Centre Distance between rollers is within 0.005mm.
- Made from high quality alloy steel.
- Hardness 60 ± 2 Rc & Tempered.
- Firm hinged clamp to reduce possibility of distortion.
- M6 & M8 tapped holes for job clamping.

Sr. No.	Cat No.	Size (mm)	Bottom C.D.	Top C.D.	Inclination
1.	UL 40201	150 L x 120 W x 95H	100	70	0 - 45°
2.	UL 40202	250 L x 150 W x 95H	150	100	0 - 45°
3.	UL 40203	300 L x 150 W x 95H	200	100	0 - 45°
4.	UL 40204	450 L x 150 W x 105H	300	100	0 - 45°

25 SERIES **UL - 403** "ULTRA" BRAND MAGNETIC SINE-TABLE (IS : 5939- 1970)



- Used for Precision measurement, setting of angles & Light machining.
- Accuracy for Square ness, Flatness & Parallelism within 0.010mm upto 200L & 0.015mm upto 450L.
- Angle can be set within ± 5 seconds.
- Centre Distance between roller is within 0.005mm.
- Made from high quality alloy steel
- Hardness 60 ± 2 Rc & Tempered.
- **Magnetic Table for job holding.**
- Firm hinged clamp to reduce possibility of distortion.
- Magnetic Chuck with fine Pitch. (1.5mm)

Sr. No.	Cat No.	Size (mm)	Centre Distance (mm)	Inclination
1.	UL 40301	150 L x 120 W x 105 H	70	0 - 45°
2.	UL 40302	250 L x 150 W x 105 H	100	0 - 45°
3.	UL 40303	300 L x 150 W x 105 H	100	0 - 45°
4.	UL 40304	450 L x 150 W x 105 H	100	0 - 45°
5.	UL 40305	450 L x 200 W x 105 H	150	0 - 45°